

FÖRNYELSE-  
LABBET.

A policylab for societal and  
cultural transformation

SVID



A lab process to assist civil servants to take the leap from a focus on..

quick results

silos

being an expert

control

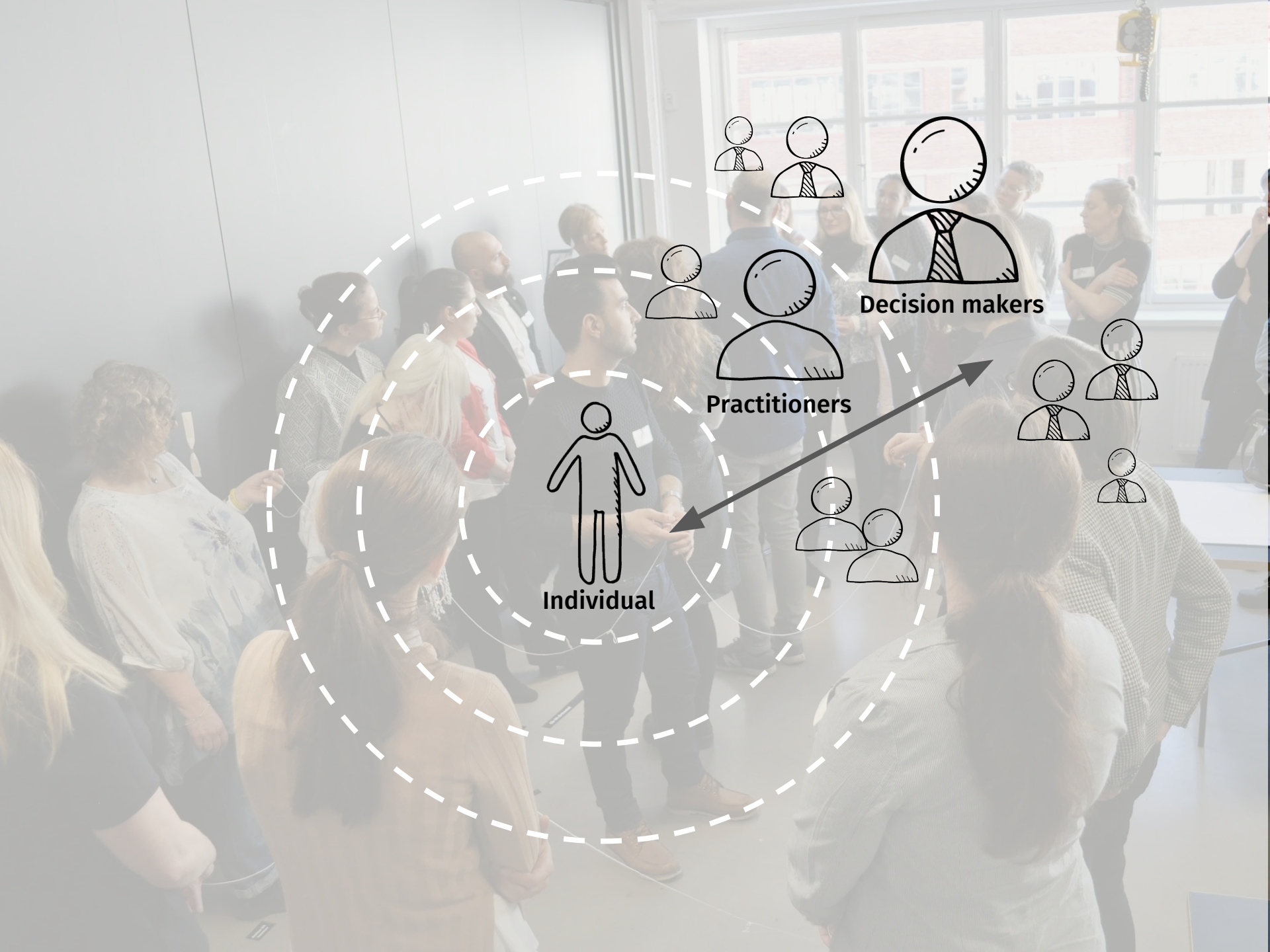
To...

*a testing culture*

*System*

*helping users being experts themselves*

*trust*



Individual



Practitioners



Decision makers



# Why a more user centric reflection is needed?



Stop doing



Make less of

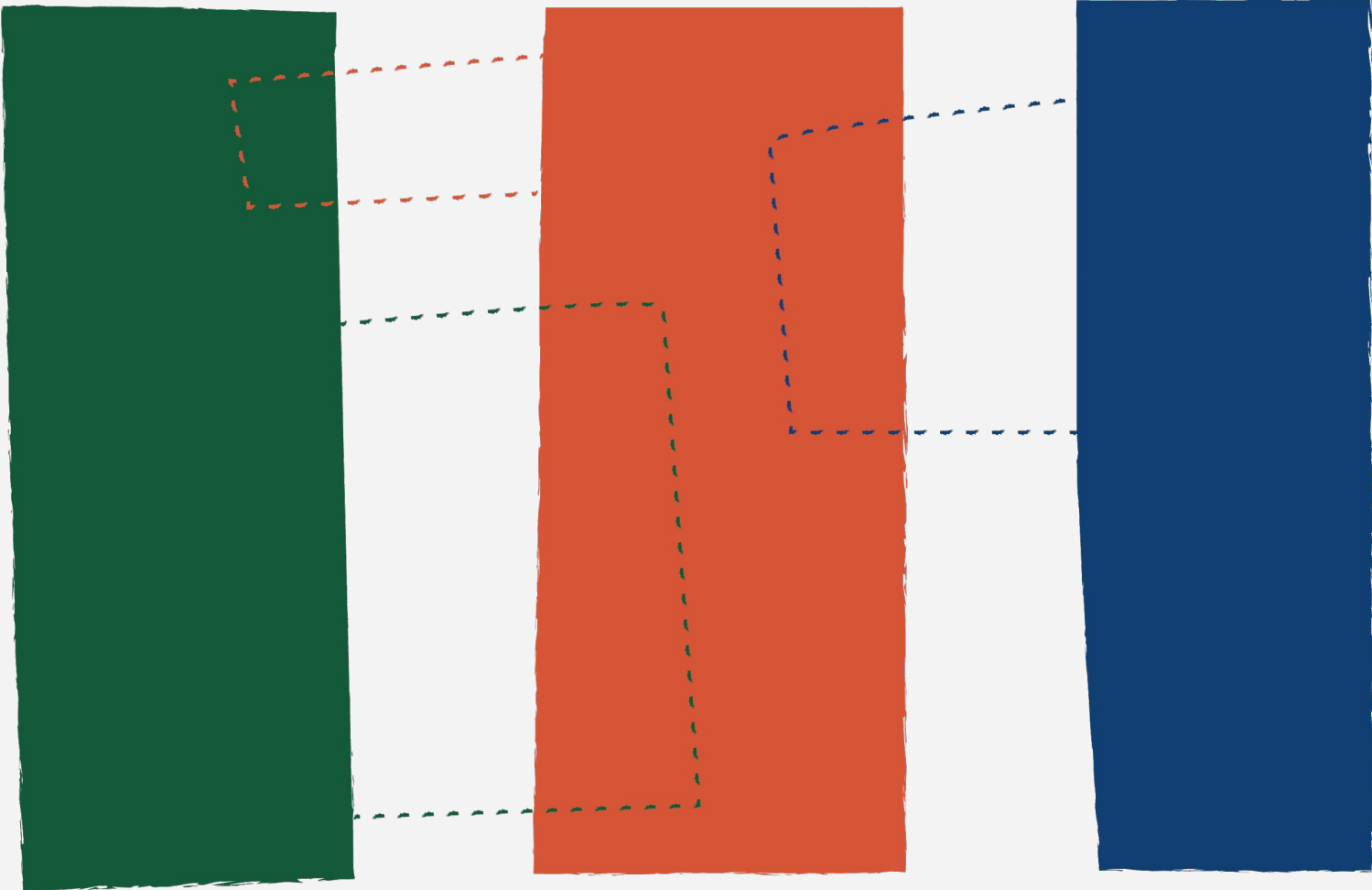


Make more of



Start doing

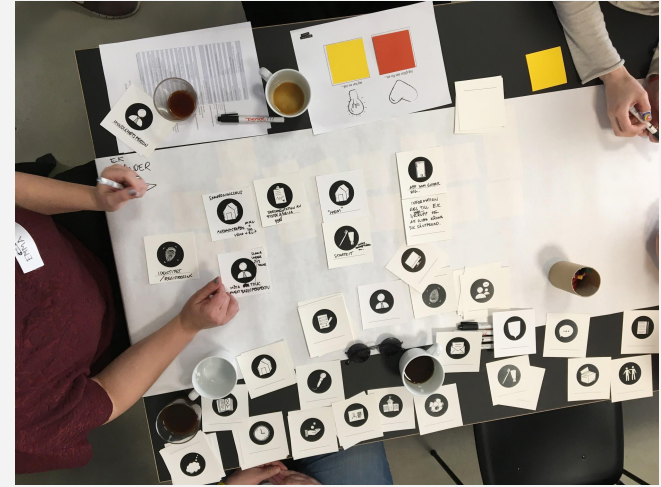
# How can we create value to users and our organisations in the organisational gaps ?



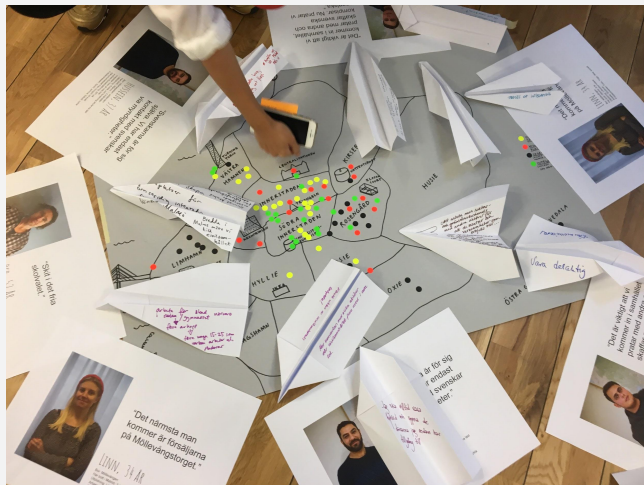
## Better everyday lives of unaccompanied minors



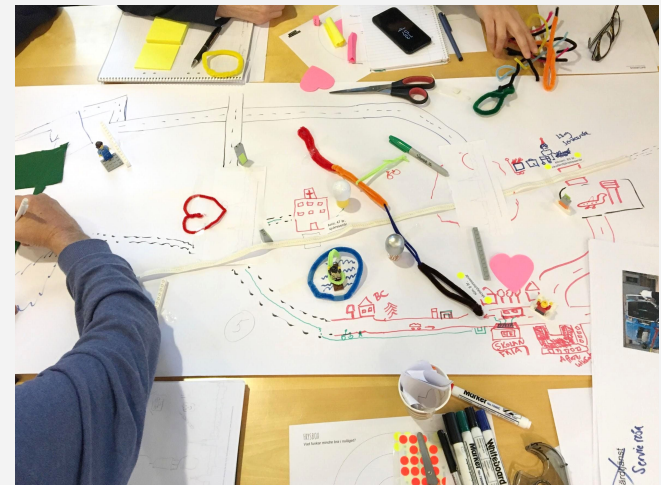
## The initial reception of unaccompanied minors



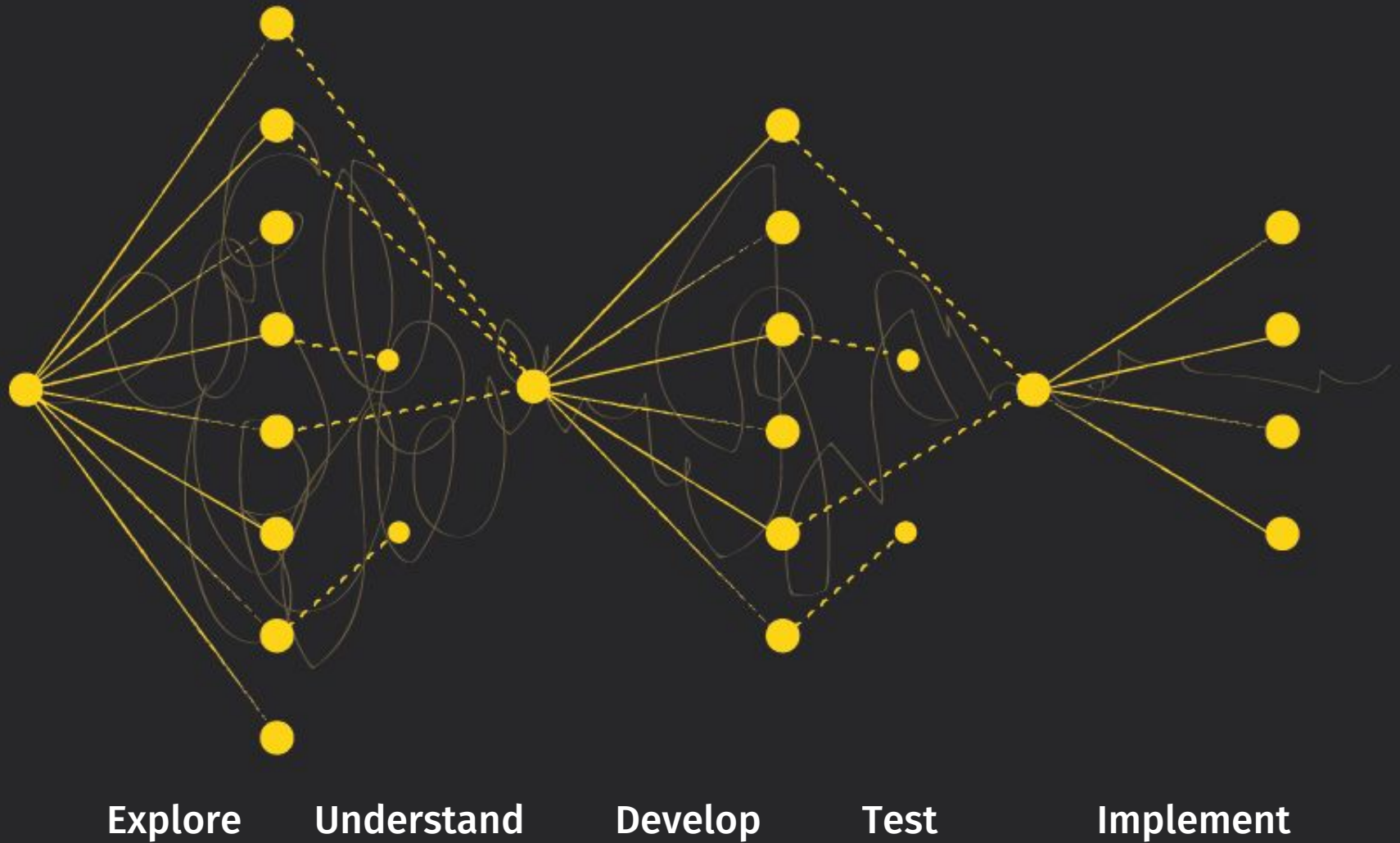
## Integration lab



## Coordination of personalized transportation

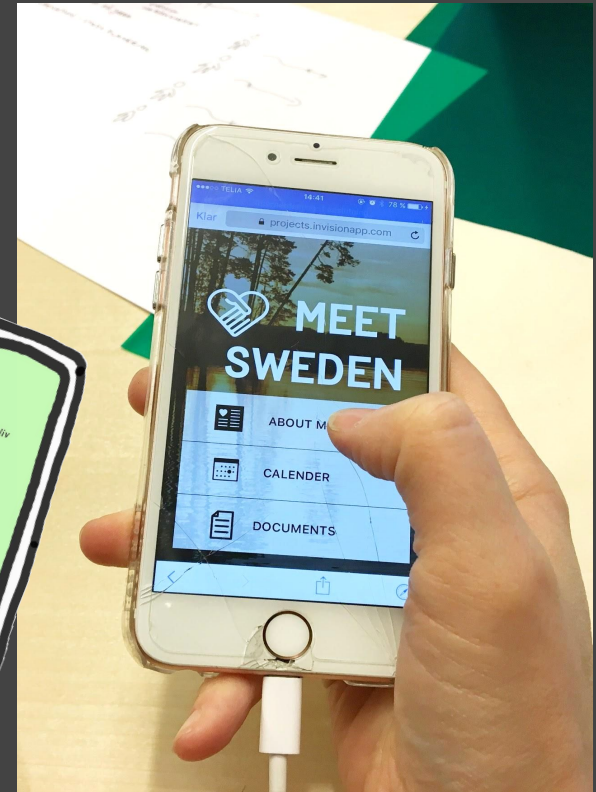
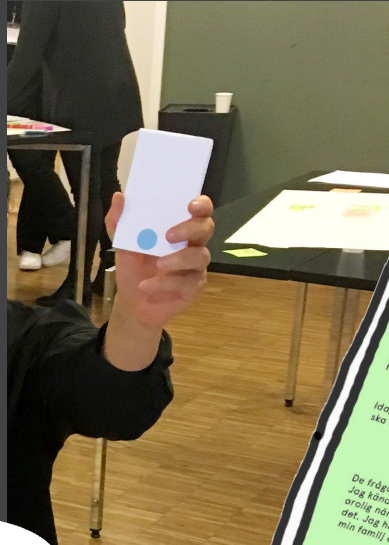


# Design process



Ganska ofta sitter man med en ungdom som inte vet vad de sa på den senaste läkarundersökningen.

Socialekreterare



Varför måste jag berätta min historia om och om igen för alla jag träffar?

Ungdom

Understand

Develop

Test



# Our theory of change?

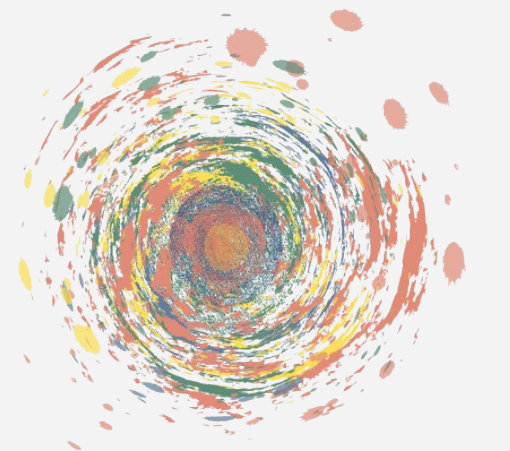
Showcase



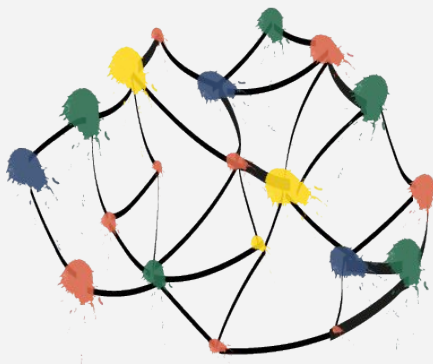
Name



Nourish



Connect



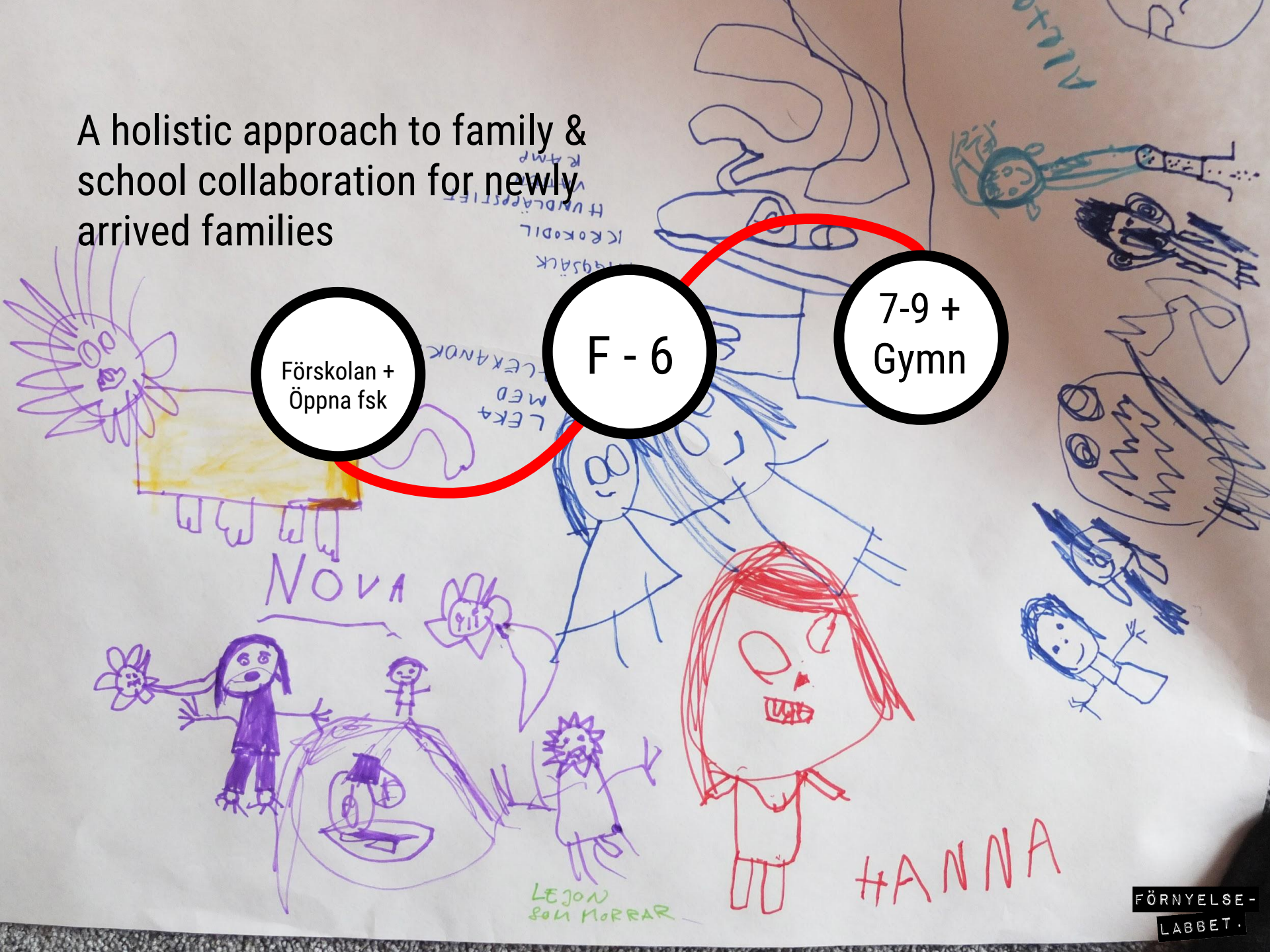
Based on the Berkana model

# A holistic approach to family & school collaboration for newly arrived families

Förskolan +  
Öppna fsk

F - 6

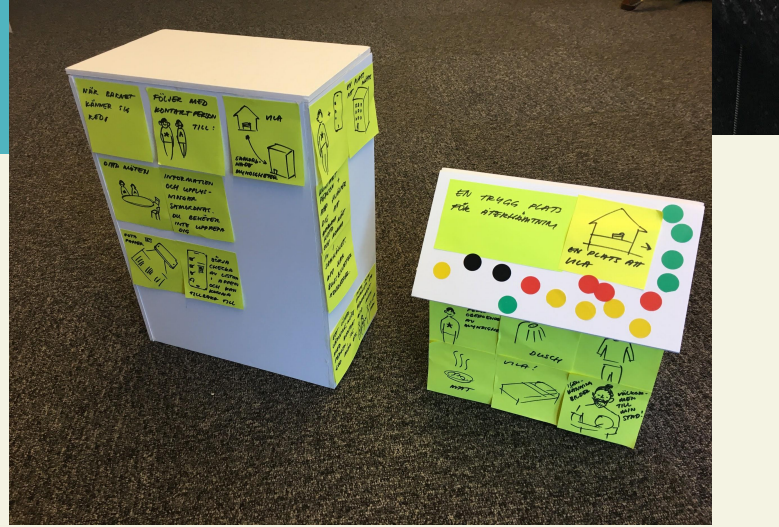
7-9 +  
Gymn







# UNHCR-Lab on initial reception of unaccompanied minors



8 koncept - 3 test environment

...pp som testar

10 min (på den person som är närmast målgruppen)  
...son testar, 1 ter tid, de andra dokumenterar

10 min

FÖRNYELSE-  
LABBET

SVD

www.svd.se

Looking forward to launching our  
first local lab with and for newly  
arrived minors in fall 2018  
Follow us here-soon in English

[www.fornyelselabbet.se](http://www.fornyelselabbet.se)



FÖRNYELSE-  
LABBET